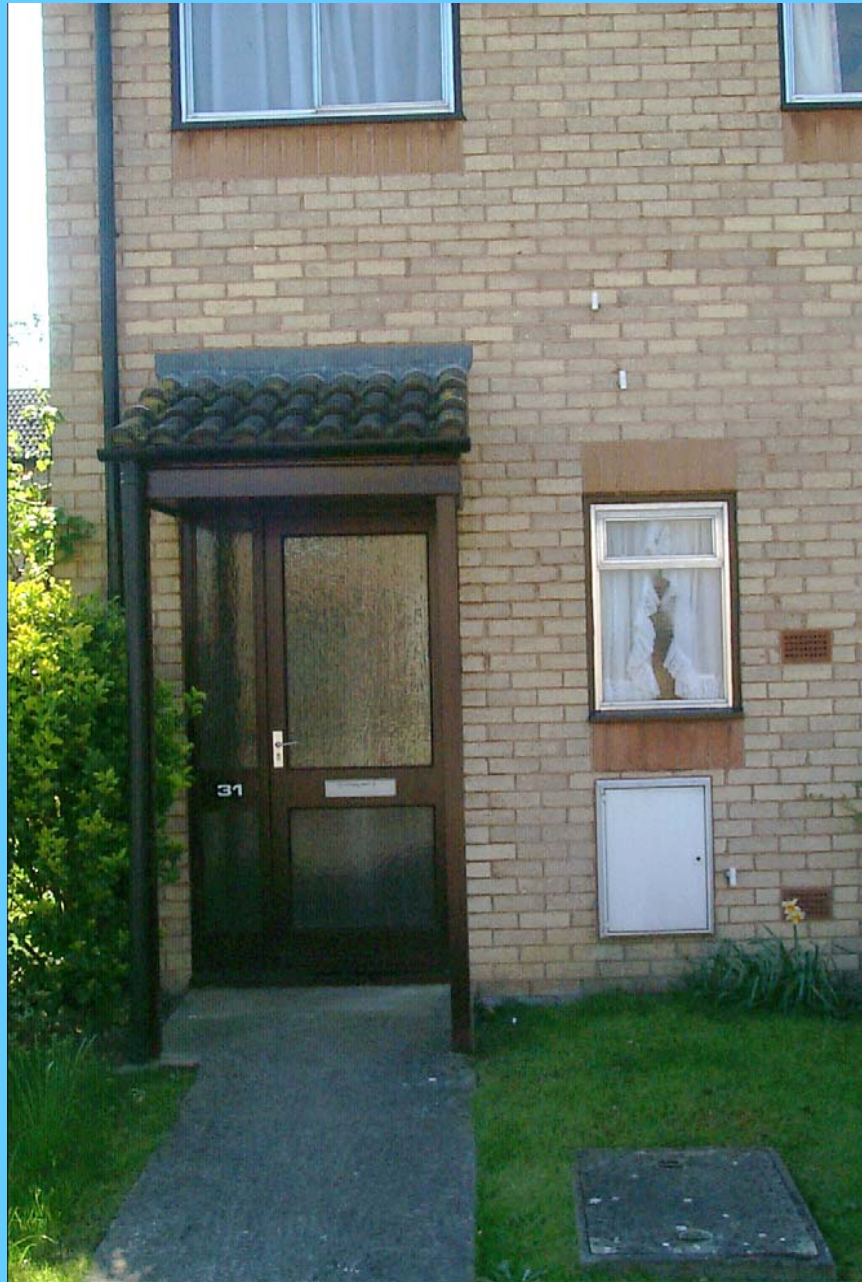


**The Gloucester Smart  
House for People with  
Dementia**

**Dr Roger Orpwood**

**Bath Institute of Medical  
Engineering**

**University of Bath, UK**



**Gloucester smart house**

# **The collaborating team**

**Dementia Voice**

**Housing 21**

**Bath Institute of Medical  
Engineering**

**Gloucester Smart  
House**

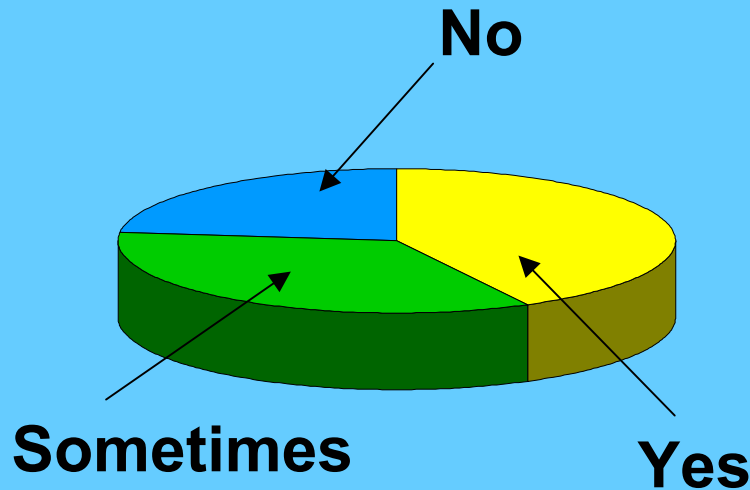
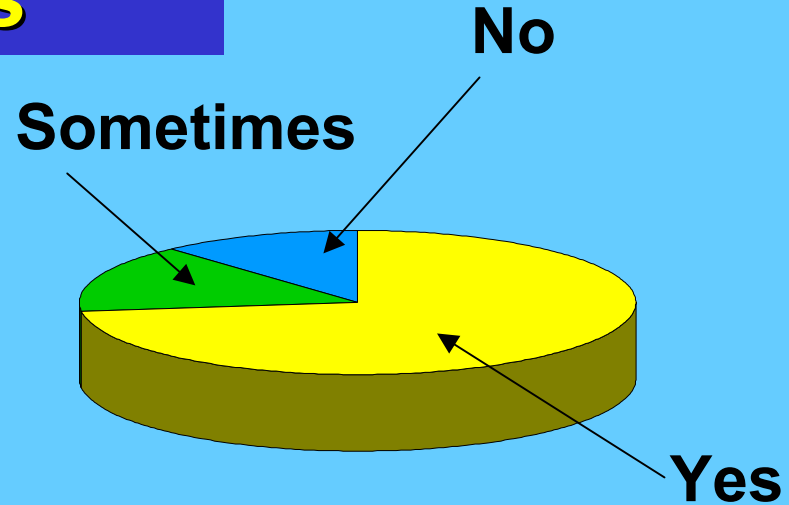
# User Involvement

- **Discussions with care professionals**
- **Survey of needs with carers**
- **Discussions with carers**
- **Evaluations with carers and users**

**Gloucester Smart  
House**

# Survey of needs

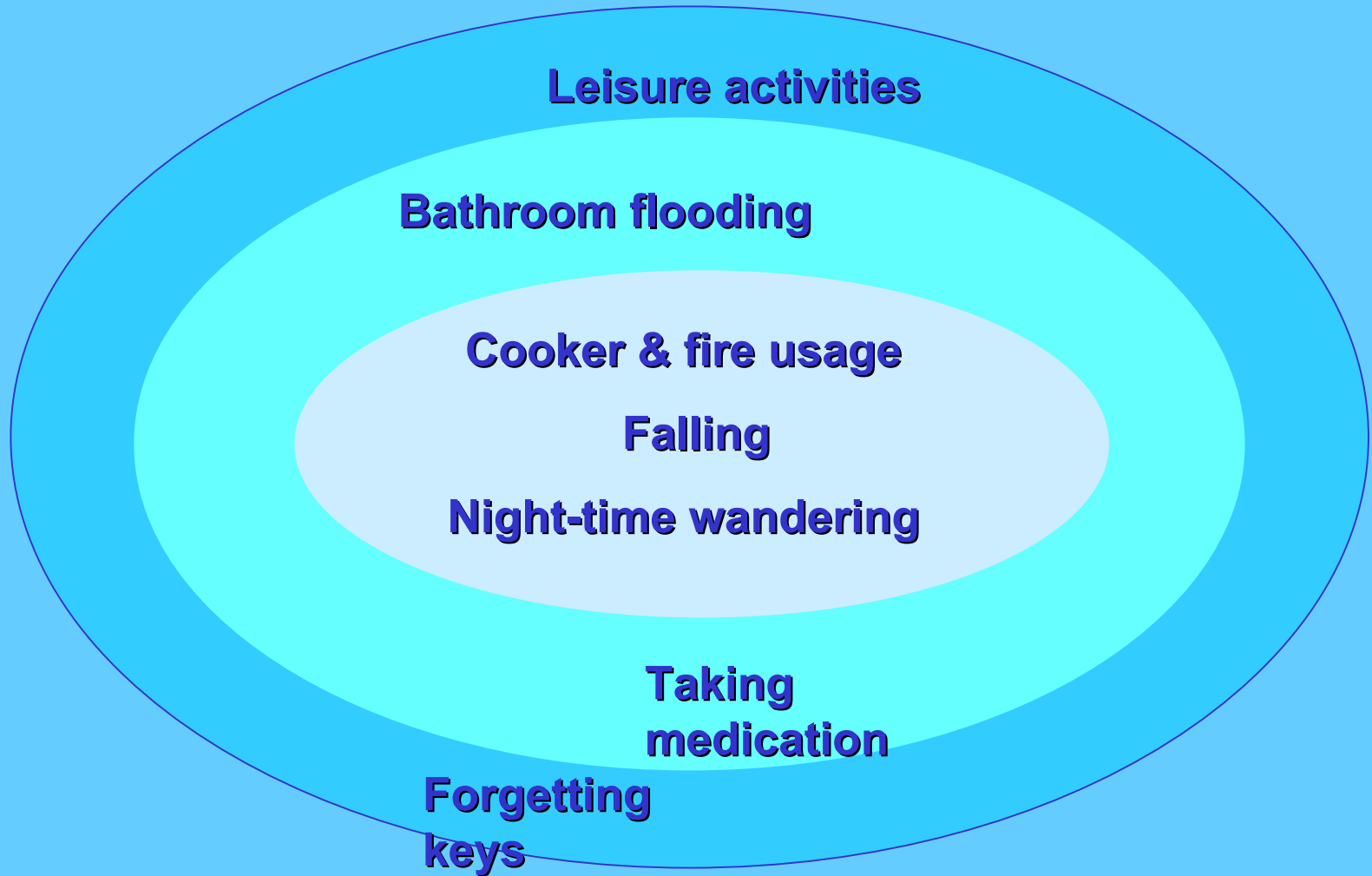
“Does the person you care for have difficulty using appliances to prepare food?”



“Does the person you care for have problems recognising written signs?”

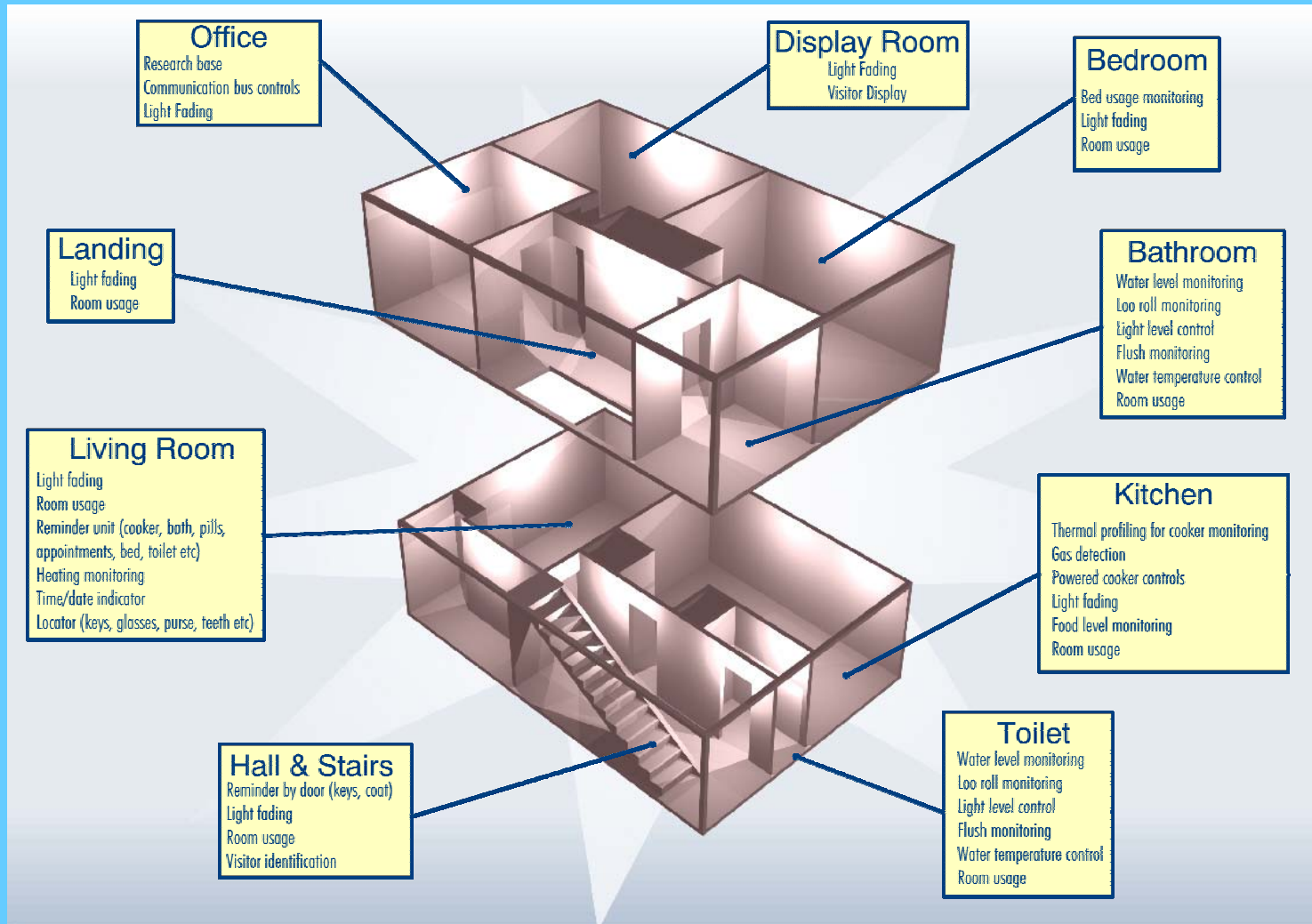
**Gloucester smart house**

# Priorities



**Gloucester Smart  
House**

# Smart house rooms



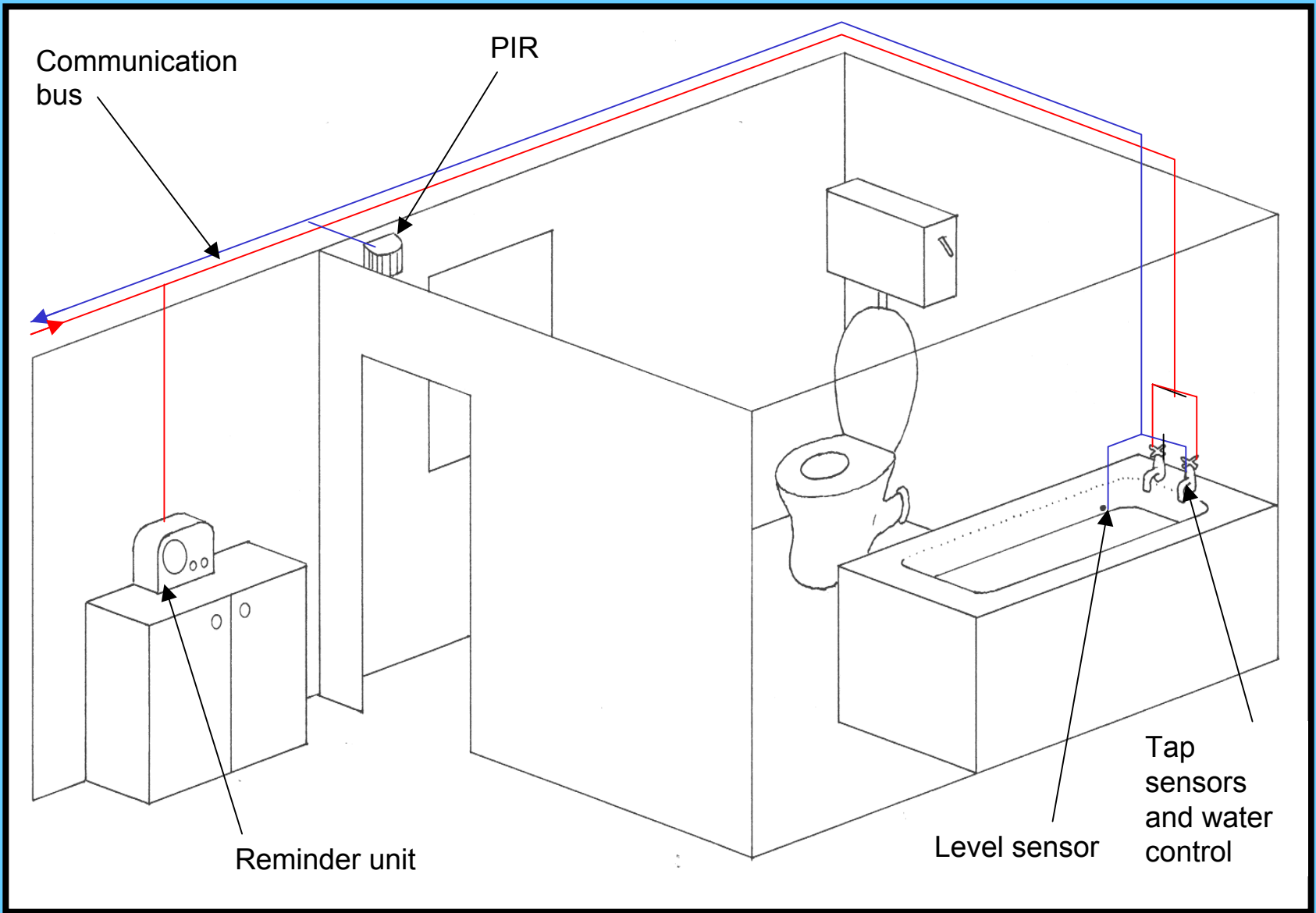
Gloucester smart house

# **Design philosophy**

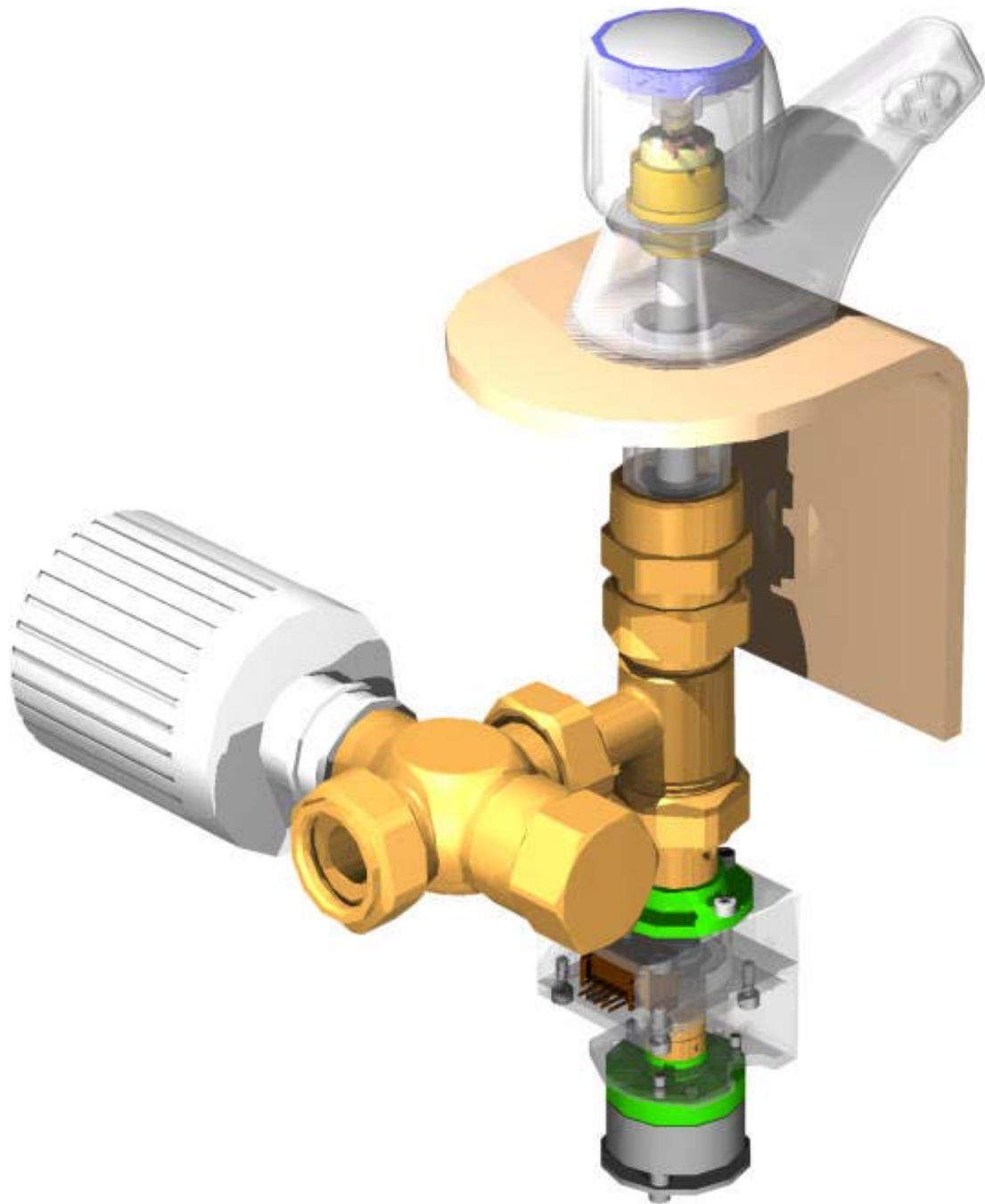
**Example: Tap monitor**

**Gloucester Smart  
House**





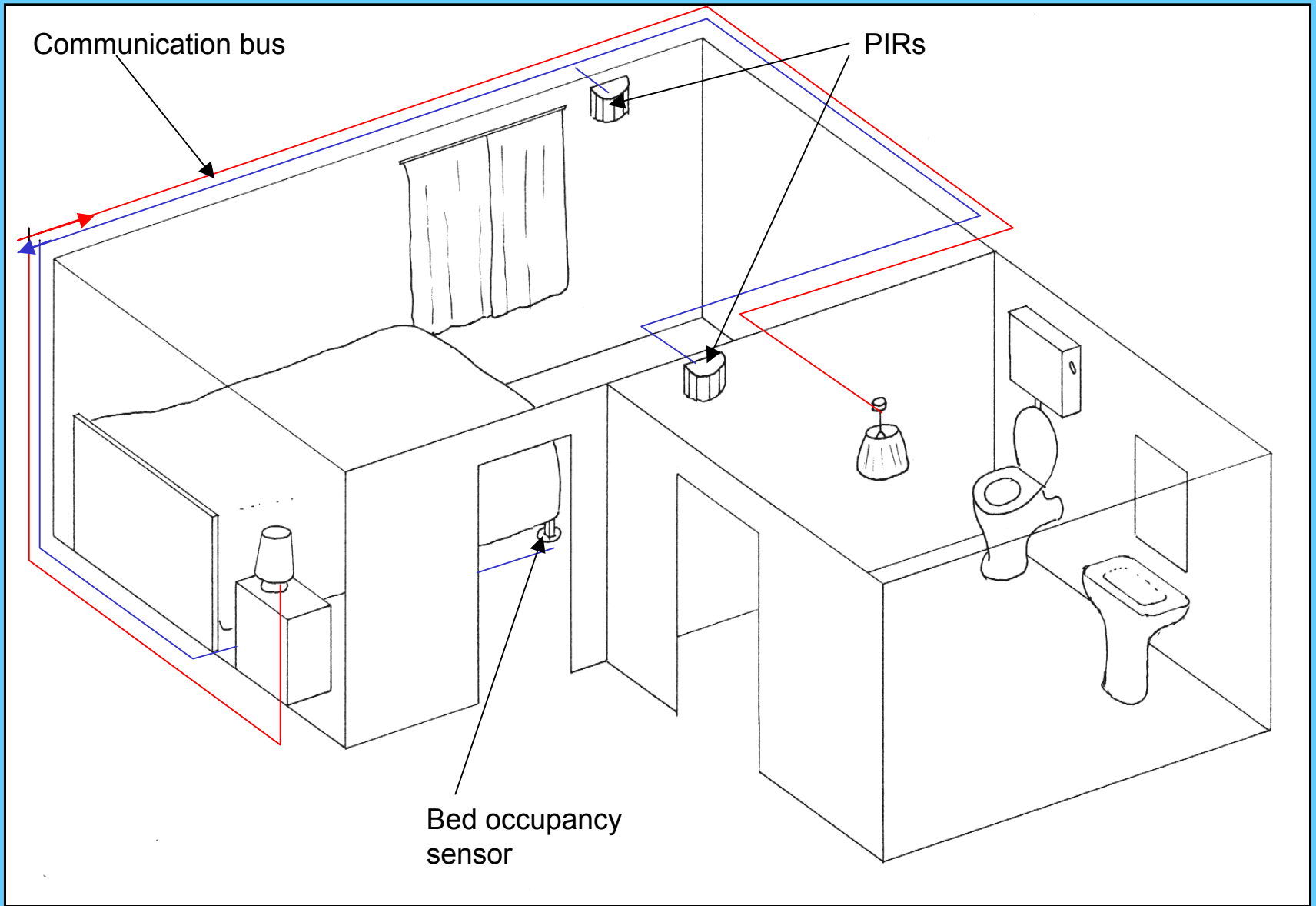
**Gloucester smart house**



# Evaluations

**Example: Night lighting**

**Gloucester Smart  
House**



**Gloucester smart house**

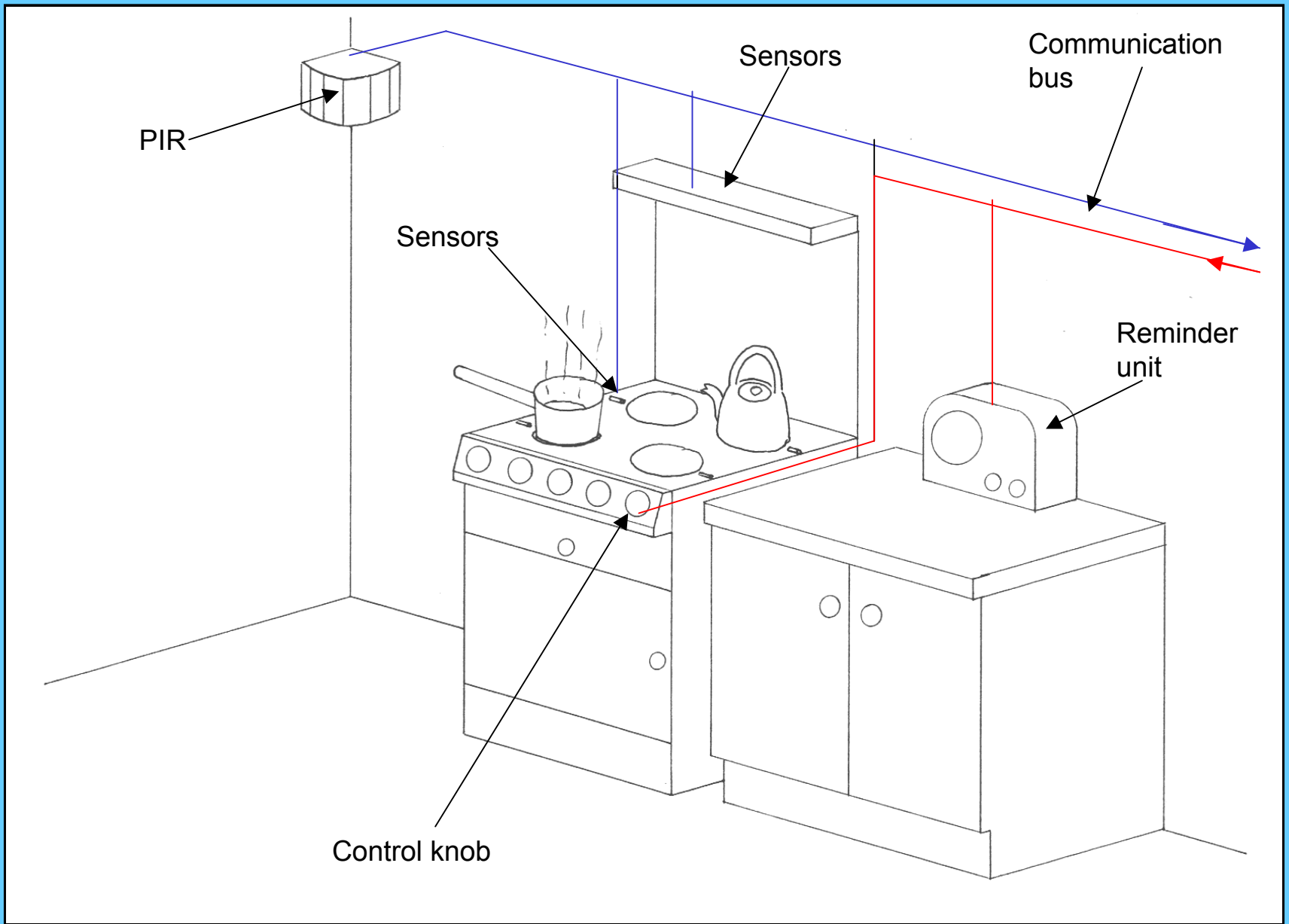


# **Monitoring user behaviour**

**Example: Cooker  
monitor**

**Gloucester Smart  
House**



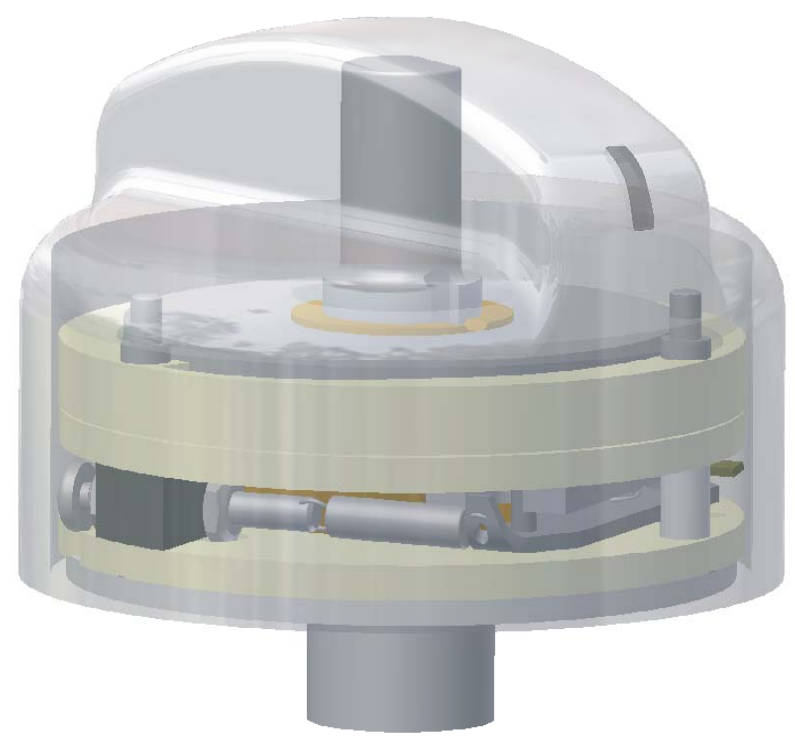


**Gloucester smart house**

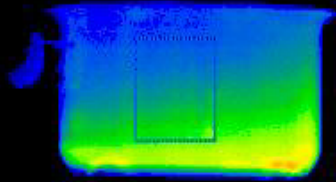




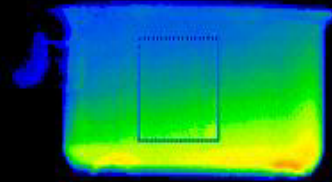
The BIME  
Cooker Knob  
for people  
with dementia



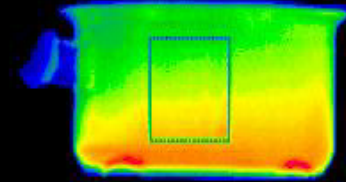
# Thermal images of a pan boiling on a gas ring



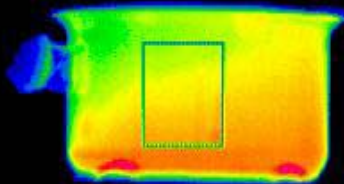
Heating up



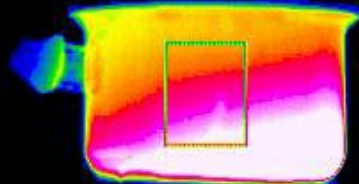
Heating up



Boiling



Boiling



Boiled dry



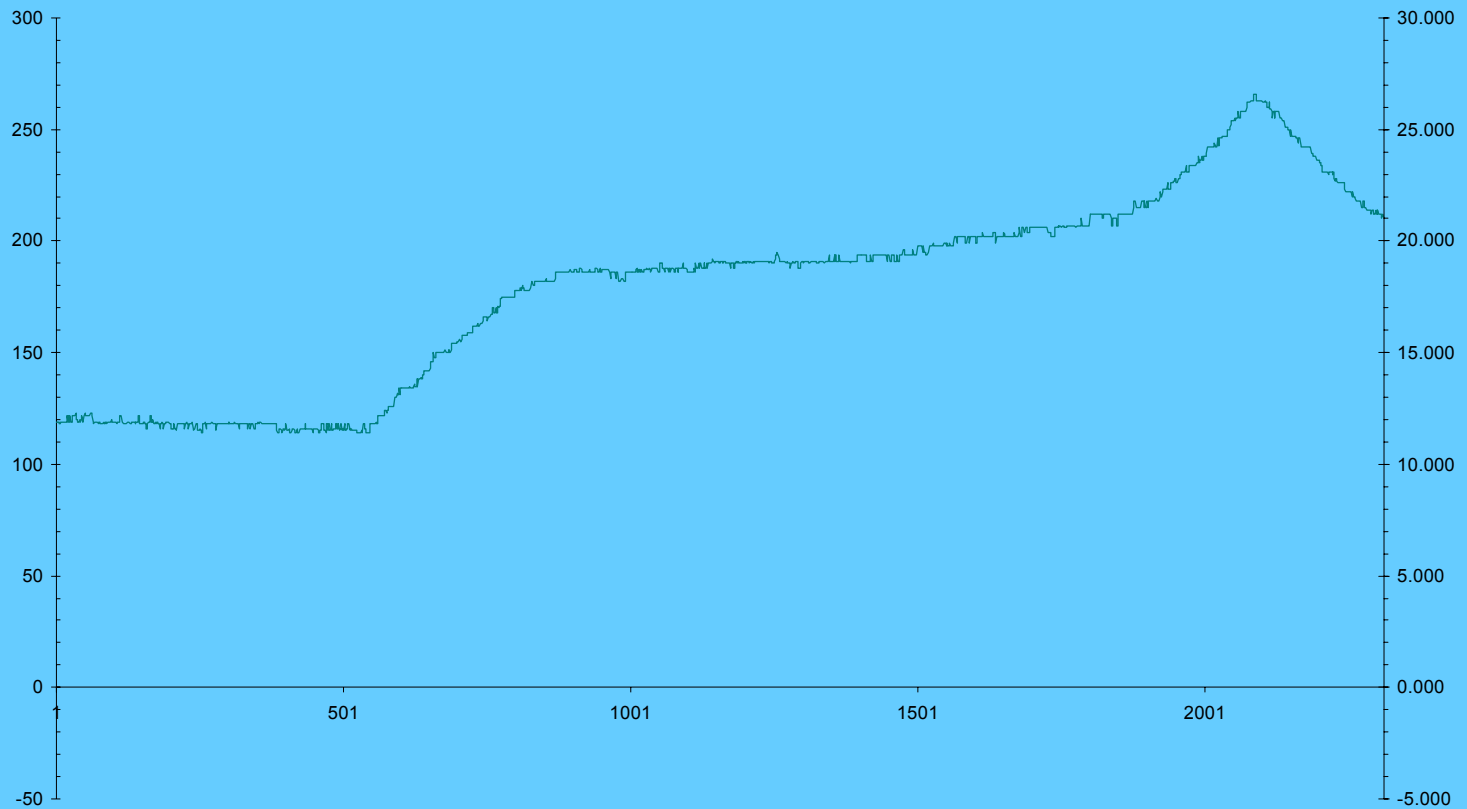
# Infra-red sensing



# Sensor mounting



# Typical raw data

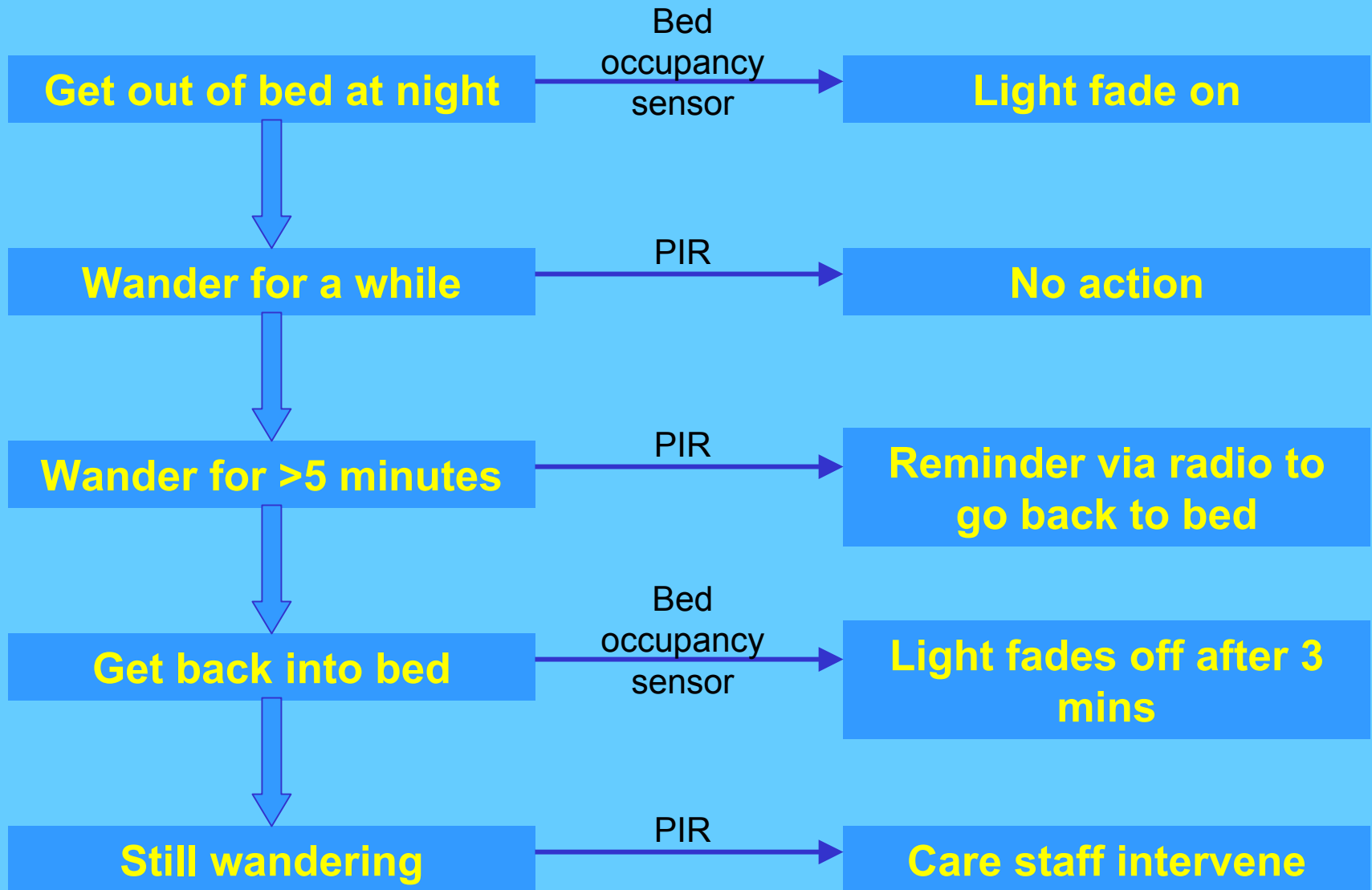


# Communication

Gloucester Smart  
House

## User behaviour

## House reaction

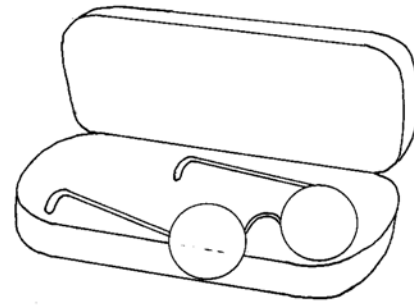


# **Complex user reactions**

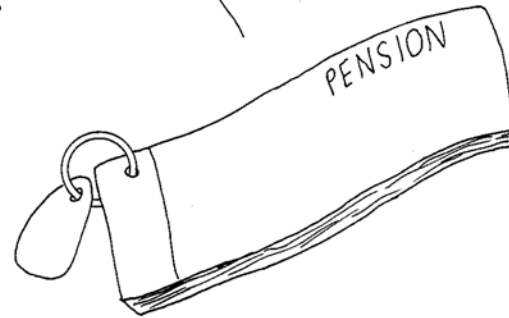
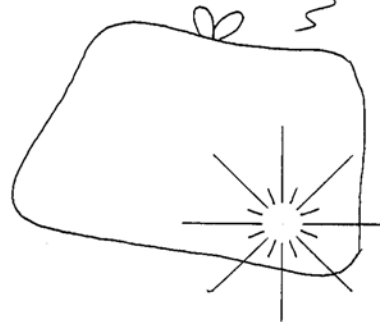
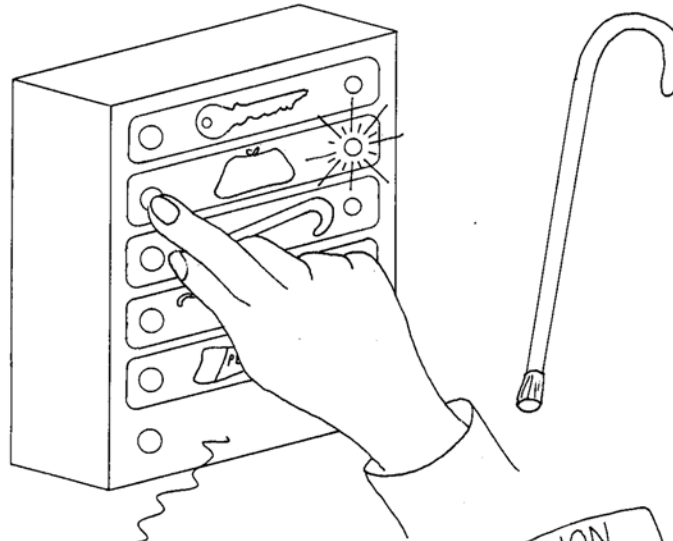
**Example: Locator for  
lost objects**

**Gloucester Smart  
House**





**Where's my  
purse?**



**Gloucester smart house**



LEAD NOTICE

The State of New York has established a lead action level for lead in paint of 0.06%.

By the State of New York:

1. Residents should avoid lead-based paint.
2. Lead-based paint should not be disturbed, sanded, or scraped.
3. Repairs should be done in a way that does not create lead dust or lead chips.
4. Lead-based paint should not be used in new construction.
5. Lead-based paint should not be used in new construction.

Thank you for your cooperation.

NYSDH

  
**No Smoking**



LEAD NOTICE

The State of New York has established a lead action level for lead in paint of 0.06%.

By the State of New York:

1. Residents should avoid lead-based paint.
2. Lead-based paint should not be disturbed, sanded, or scraped.
3. Repairs should be done in a way that does not create lead dust or lead chips.
4. Lead-based paint should not be used in new construction.
5. Lead-based paint should not be used in new construction.

Thank you for your cooperation.

NYSDH







**Gloucester smart  
house**

# Acknowledgements

Smart house developments supported by an EPSRC grant as part of the EQUAL programme

Some evaluation work supported through the European Commission 5th framework ENABLE project

**Gloucester Smart House**