

# Millennium Home

Brunel University

# Unbridgeable Gap Between need for Medical and Social Care And the Tax Yield



VAT  
Income  
Tax  
NHI  
Etc.

# Innovation



in the 21st Century will take place not in Science and Technology, but in the Organisation of Society using “Contemporary” Technology

# **Millennium Homes**

**A Foresight/Link Project by a  
consortium consisting of**

**Brunel University**

**British Telecom**

**Huntleigh Healthcare Ltd.**

**Beaver Housing Association**

**(representing several other Association)**

**Plextek Ltd**

**Special Security Products**

# Metastable People

- No condition requiring constant nursing
- Ability to manage the activities of normal life within the community with only minimal support.
  - Possibly some deficiency in short term memory
- Inability always to respond to challenges posed by domestic conditions, minor disease, or external influences.
  - Possibility that on rare conditions, situations will develop which will require almost immediate assistance.

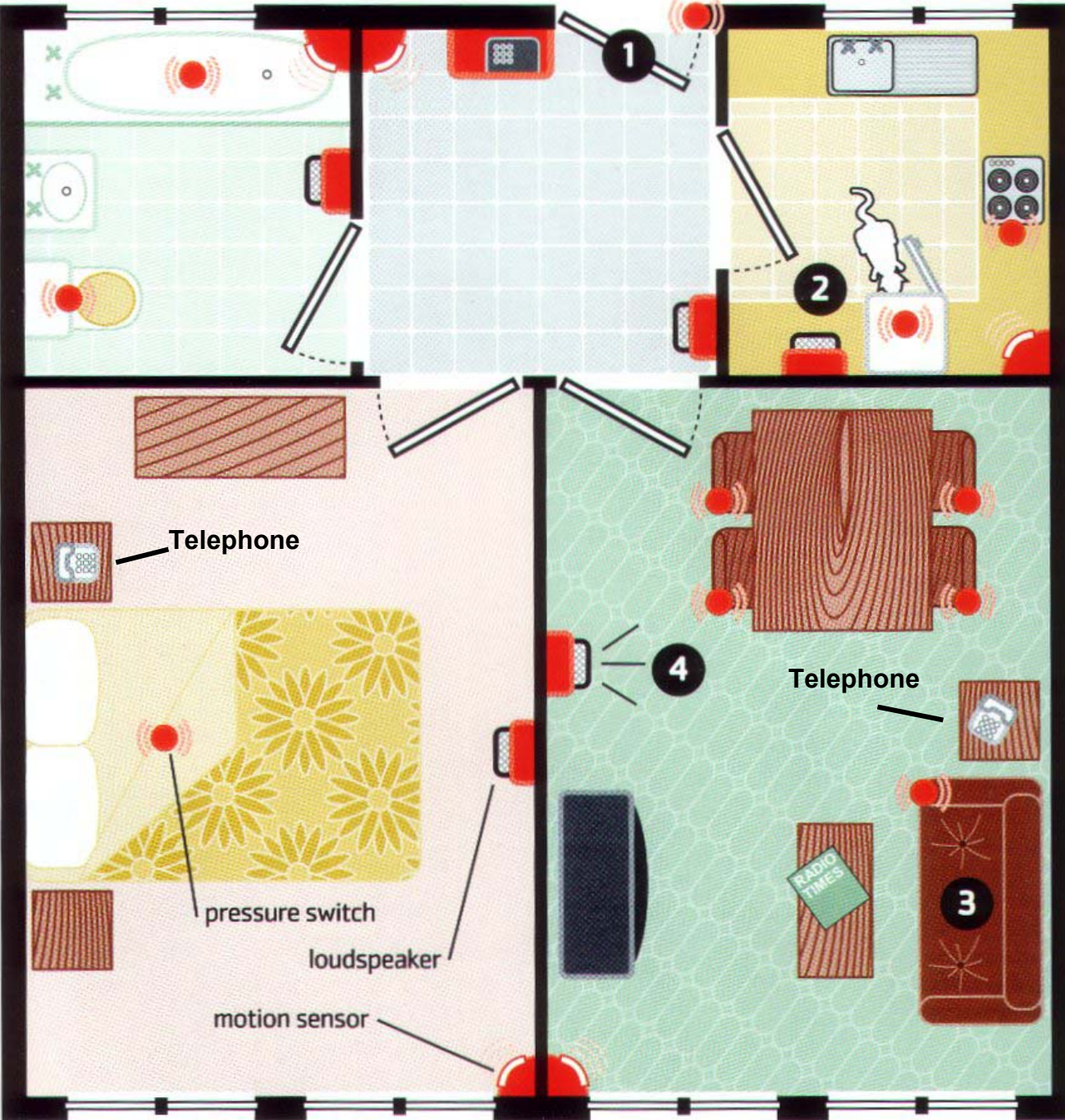


# What We want to Achieve

- To allow **METASTABLE** people to be able to remain in their own homes for longer.
- In appropriate circumstances to allow the **COMMUNITY** to operate the system.
- To make it possible to fit the
  - required **TECHNOLOGY**
  - in any home in one day

# Millennium Homes

Typical Arrangement of occupation, PIR and switch sensors, Telephones and speakers, in a One bedroom flat





# The Big Difference

The system is **INTERACTIVE** and able to **NEGOTIATE** with the occupant, using speech, screens or other means to issue warnings and to accept responses from the occupant. These will acknowledge a warning, or modify the action taken by the system.

Failure to remove the hazard after a warning, such as locking the back door, or failure to respond at all, will raise the “level of concern”

# Sensors

## Real

Location, Activity, State of doors, windows, domestic appliances, time, Special actions, like taking of medication.

## Virtual

Any combination of the state of any of the above, taken in conjunction with what has happened previously

# Great Flexibility

**The system is not designed merely to detect a few pre-determined situations, such as a fall, but will detect an almost unlimited range of situations which could give rise to a short or long-term hazard.**

**To change or re-define these does not normally require any change to the hardware.**



# Incentives



Honour

Money

Discounts

Access to Training

Access to Exclusive facilities



**Entitlement to Care or Pension in  
the Future for the Supporters  
or their Family**